

Issue #15 - July 2008

full circle

THE INDEPENDENT MAGAZINE FOR THE UBUNTU COMMUNITY

 ubuntu

 kubuntu

 xubuntu

 edubuntu

REVIEW :
HP PHOTOSMART PRINTER
INTERVIEW :
MATHIAS GUG

HOW TO :
GIMP PART 4
GRUB 101
SEPARATE HOME PARTITION
CREATE YOUR OWN SERVER 7

COMMAND AND CONQUER :
THE INS AND OUTS OF
DIRECTORIES

MOVING HOUSE

MOVE YOUR HOME TO A SEPARATE PARTITION.

photo: Flickr.com - shortie66



LAYERS

PEELING THE GIMP,
LAYER BY LAYER



full circle

www.fullcirclemagazine.org

News p.04

Command and Conquer :
Ins And Outs Of Directories p.06

How-To :
Separate Home Partition p.08
Server Series - Part 7 p.13
GIMP - Part 4 p.15
GRUB 101 p.18

My Story :
Ubuntu Saves The Day p.19
From Mickey's ABC's To Kubuntu p.20

Review : HP Photosmart C3180 p.22

Interview : Mathias Gug p.25

Ubuntu Women p.27

Ubuntu Youth p.28

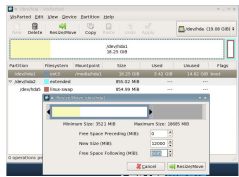
Letters p.30

Q&A p.32

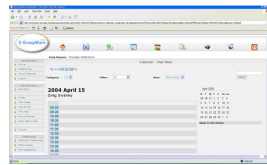
My Desktop p.33

Top 5 : Slim Web Browsers p.35

How to Contribute p.37



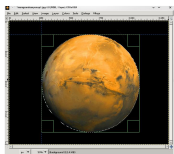
P.08



P.13



P.06



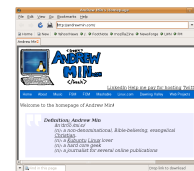
P.15



P.22



P.25



P.35



The articles contained in this magazine are released under the Creative Commons Attribution-Share Alike 3.0 Unported license. This means you can adapt, copy, distribute and transmit the articles but only under the following conditions: You must attribute the work to the original author in some way (at least a name, email or URL) and to this magazine by name ('full circle magazine') and the URL www.fullcirclemagazine.org (but not attribute the article(s) in any way that suggests that they endorse you or your use of the work). If you alter, transform, or build upon this work, you must distribute the resulting work under the same, similar or a compatible license.

Full Circle magazine is entirely independent of Canonical, the sponsor of the Ubuntu projects, and the views and opinions in the magazine should in no way be assumed to have Canonical endorsement.



EDITORIAL

Welcome to another issue of Full Circle Magazine.



By the time you read this, **KDE 4.1** will be unleashed upon the masses. I've been following KDE 4 since 4.0, and I can honestly say: it's come on in leaps and bounds.

Shown left is my current desktop, KDE 4.1 RC1, with Twitter plasmoid top right, a couple of post-it notes, middle right (yes, I am that forgetful!), a folder view, middle top, and some shortcuts, top left. Not only does KDE 4.1 look lovely, but it's far more usable now than in its 4.0 incarnation. So, if you haven't given KDE 4 a try lately (or didn't like 4.0) give it a whirl. I think you'll be impressed.

Speaking of *Twitter*, you can follow us at: twitter.com/fullcirclemag, where the team will twitter their hearts out about what they are up to in the world of **Full Circle**.

I hope you enjoy this issue, and remember: we're only an email away so feel free to let us know what you like (or dislike) and what you want to see in future issues. Contact addresses are on the last page of this issue.

All the best,

Ronnie

Editor, Full Circle Magazine

ronnie@fullcirclemagazine.org

This magazine was created using :



What is Ubuntu?

Ubuntu is a complete operating system that is perfect for laptops, desktops and servers. Whether at home, school or work Ubuntu contains all the applications you'll ever need including word processor, email application and web browser.

Ubuntu is and always will be free of charge. You do not pay any licensing fees. You can download, use and share Ubuntu with your friends, family, school or business for absolutely nothing.

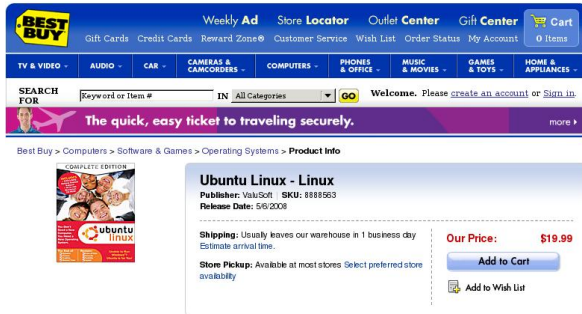
Once installed, your system is ready to use with a full set of productivity, internet, drawing and graphics applications, and games.

<http://url.fullcirclemagazine.org/7e8944>



Feel free to email news stories to: news@fullcirclemagazine.org
Please include a source URL.

Best Buy Is Selling Ubuntu



It appears that *Best Buy* is now selling *Ubuntu* [just the OS, no PC], both through its Web site and in its brick-and-mortar locations. Going by the release on the product page, Ubuntu has actually been available for the low, low price of \$19.99 since May 6th of this year. It is being packaged as the 'Complete Edition.' While they don't specify on the site what version is being offered, a quick call to a local store revealed it to be Hardy Heron, the latest Long Term Support version.

Source: slashdot.org

Apress Ubuntu Book Updated

Keir Thomas and Jamie Sicam have updated the best-selling and award-winning 2006 title, ***Beginning Ubuntu Linux: From Novice to Professional***. With more than 150 pages added since the first edition, this new edition, based on version 8.04, covers everything a new user would want, and need to know. Aimed at anyone wanting to switch to Ubuntu, this book offers everything a user needs to get started, including a double-sided DVD that contains the full version of *Ubuntu 8.04* and much more.

According to coauthor Keir Thomas, "Beginning Ubuntu Linux, Third Edition purely and simply focuses on what you need to know to use Linux. It's concise and to the point, aiming to re-create under Linux all the stuff you used to do under Windows, or even Apple Macintosh."

Source: theopenpress.com

Intrepid Alpha 2 Released

Intrepid Ibox Alpha 2 is the second alpha release of Ubuntu 8.10, and with this release comes a whole host of new features. The feature list for 8.10 has been slowly taking shape since early last month. Much is yet to be decided for 8.10

This is an alpha release. Do not install it on production machines.

The final stable version will be released in October 2008.

Source: ubuntu.com

FULL CIRCLE NEEDS YOU!

A magazine isn't a magazine without articles and Full Circle is no exception. We need your **Opinions, Desktops and Stories**. We also need **Reviews** (games, apps & hardware), **How-To** articles (on any K/X/Ubuntu subject) and any questions, or suggestions, you may have.

Send them to: articles@fullcirclemagazine.org



KDE Developers Respond To KDE 4.0 Backlash



KDE Developers have responded to the ongoing controversy around their handling of the transition from KDE 3 to KDE 4, which began with the release of KDE 4.0 in January.

With KDE 4, developers shifted the system from the Qt 3 application-development framework to Qt 4, while rebuilding the desktop environment from scratch.

The resulting software has been criticised for its lack of features and customisability, bugs and usability problems. Some have suggested including older versions of KDE alongside KDE 4 or even creating a new system based on KDE 3.5 but ported to the Qt 4 framework.

KDE board member Sebastian Kähler admitted that KDE developers were surprised by the vehemence and persistence of KDE 4's critics.



"As we firmly believe in KDE 4 and the future of the free desktop, we expected the heated discussions about KDE 4, and especially the 4.0 release, to go away, and we were wrong about that," he wrote in an open letter published on the open-source news website Groklaw.

The problems are largely due to inflated expectations of KDE 4, something KDE developers had attempted to address ahead of the release, he said.

KDE 4.0 was never intended to be a full replacement for KDE 3, but was released in January in order to give KDE 4 application developers a stable platform to develop to, Kähler said.

Version 4.0 of the system was intended to lay foundations for a system that would be able to add functions that would have been difficult or impossible to build onto the ageing KDE 3 platform, Kähler said.

Source: ZDnet.co.uk

KDE 4.1 will be released at the end of July.

Shuttleworth Dream: 'out-pretty' Apple

That dream? To produce a desktop more beautiful to ordinary users than legions of Apple programmers sipping on the milk of chief exec Steve Jobs' alleged brilliance are capable of producing. That includes a desktop not funded by a clutter of annoying banner or Flash-based ads, but paid for by subscription-based services.

Now you're done dreaming, go home and code for the victory.

In a Tuesday evening O'Reilly Open Source Convention (OSCON) keynote, Shuttleworth called on delegates to make a concerted effort not just to catch Apple but to overtake the company in the quality of the desktop experience they deliver users.

His company Canonical, Ubuntu's commercial sponsor, is working to make the Ubuntu desktop "more beautiful" in the next two years, he told OSCON.

"I think the great task in front of us in the next two years is to lift the experience of the Linux desktop from something stable and usable and not pretty, to something that's art," Shuttleworth said.

Source: theregister.co.uk



COMMAND AND CONQUER

Written by Robert Clipsham

Last month we showed you how to stay safe using a command line. Now that you know this, you can start using it to your advantage! Over the next few issues, we'll show you the basics of file management, which will be of use later on when doing more advanced things.

The first command in this issue will just prove a statement from the start of last month's article, "you are in your home directory". Whenever you see ~ this means your home directory, so to prove this, type (in a terminal):

```
pwd
```

I get this output:

```
$ pwd
```

```
/home/robert
```

Of course this will display your home directory, rather than mine. But what use is this to you? What does it mean to be 'in your home

directory'? Any commands you execute will be run in the current directory. This won't mean much for now, but it will make all the difference later on. One command that uses your current directory is 'ls', which will give you a list of files in the directory you specify, or in the current directory if you don't specify one.

It's not always useful to be in your home directory though, so let's move away. To do this, we use the change directory command, cd.

```
$ cd ~/Documents
```

If you now type 'pwd', you will see you are now in your documents directory. The '~/ ' was not needed for that command although it can be a handy shortcut to save time. In this example, you were already in your home directory, so 'cd Documents' would have worked. If you were in another directory though, say '/home/robert/Pictures/2007/December/Christmas' for example, it would

take a long time to change to the documents directory without '~/ '. However, now that you are in your Documents directory, how do you move back to your Home directory? There are several ways do to this.

```
$ cd  
$ cd ..  
$ cd ~/  
$ cd /home/robert
```

These all do the same thing if you are in your Documents directory. 'cd' with no arguments will always take you to your home folder. 'cd ..' takes you to your previous directory, so here we moved from '/home/robert/Documents' to the previous directory, '/home/robert'. The third uses the ~ shortcut, and can be used with or without the trailing '/'. The final command uses the full path, which will always take you to the exact location, providing it exists.

Now for some time saving! Rather than typing out a long directory like



'~/Pictures/2007/December/Christmas', you can just type the first few letters!

```
$ cd ~/Pi<tab>
```

Replace <tab> with you pressing your tab key, and notice how it automatically changes to Pictures? You can use this technique with most directories to save time.

Troubleshooting

You may have encountered some problems performing these simple commands. Don't worry though, it is probably something very simple. The first problem you may have encountered probably happened when you tried changing to the Documents directory.

```
-bash: cd: documents: No such file or directory
```

Everything you enter at the command line is case sensitive! *Documents* and *documents* are two completely different directories in the eyes of the terminal, so make sure you have the correct capitalization! You

may also have had this error if you don't have a Documents directory because, for example, you have deleted it. The other error you may have encountered is when trying to use tab complete. If your computer gave a beep when you hit tab, it can mean one of two things. The first is that the directory doesn't exist. If the directory doesn't exist, it won't be able to tab complete it! The other possibility is that you have multiple directories starting with Pi in your home directory. If this is the case then hit tab again, and you will get a list of possible files and directories, so you can type a few more letters and hit tab again. If there are a lot of possible matches, you will see something like:

```
Display all 388 possibilities?
(y or n)
```

Unless you want to see them all, type 'n', then hit enter and type a few more letters to narrow down the number of possible matches.

Robert Clipsham is a self confessed geek, whose hobbies include: programming/scripting, chatting on IRC and not writing his articles on time.



Goal

GetDeb extends the existing software options for Ubuntu (and derived) Linux distributions by providing major updates and software not yet available on the official Ubuntu repositories.

Quality

GetDeb packages are built using Debian/Ubuntu building rules, this reduces development effort and assures the same level of quality. However when new packages are developed or major upgrades are performed we do not follow a strict quality assurance process, this is the accepted cost required to achieve shorter release times. Still with a broader user base problems are quickly identified as fixed. It should also be noted that we do not provide system core packages or major libraries which could cause dependency problems or other major issues, in case you find a broken package recovery should be easily achieved by reinstalling the Ubuntu official package.

www.getdeb.net



HOW-TO

Written by Robin Catling

CREATE A SEPARATE HOME PARTITION

If you ran the default installation of Ubuntu using the "guided" partitioning option, you probably have two partitions on your hard drive: an Ubuntu system partition and a swap partition. This is fine until you run regular backups, or upgrade to Ubuntu 8.04, or need to recover from a disaster. Then, having all your data and programs on the same partition suddenly seems like a bad idea. Don't believe the way that most file managers present the contents of your machine; */home* is still part of your main filesystem. However, keeping the system (Ubuntu) and data (your own stuff) segregated on separate disk partitions has certain advantages. If I need to re-install or re-format the system partition, I can happily wipe it, knowing nothing happens to the */home* folder. My backups become simpler. Upgrades get easier. If only there was a way to separate

/home.

There is, but this method comes with no warranties and is liable to all manner of user-goofs, so back up everything first!

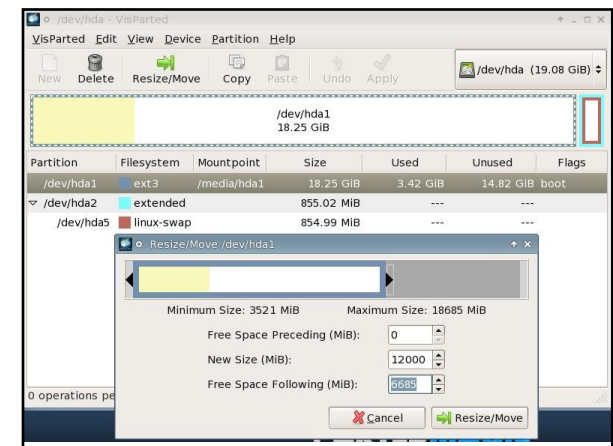
1. Resize your existing partitions to create space for the new */home*

Unless you have unused disk space, you will need to resize the existing filesystem partition to make room. Make sure you know how much space you currently use for */home* and allow some room for growth before you start this. You can use an extra internal hard drive, but don't try this on a USB drive, kids!

You will need one of the partition editors capable of on-the-fly move/resize operations leaving the disk contents in place - the Parted, Gparted, Visparted family do very well. You need to run it from an Ubuntu Live CD, Parted Magic or System Rescue CD because your

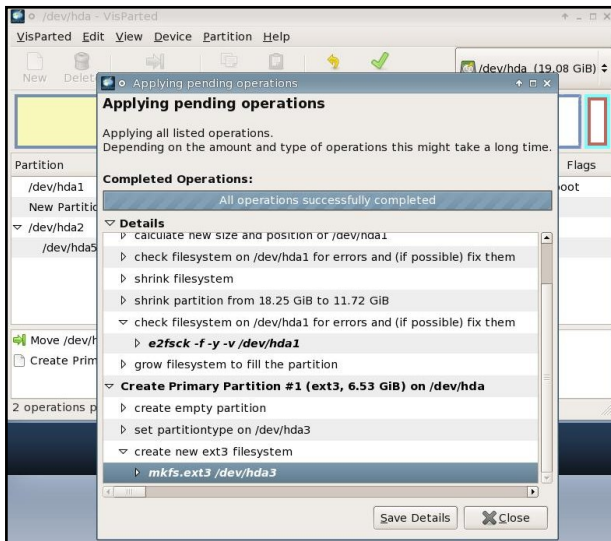
existing partition needs to be unmounted to be resized and thus your computer can't be booted into your regular Ubuntu installation.

If you screw up your installation, you can use the live CD to restore your old settings and, in the worst situation, at least recover your important files. Launch Parted, select your partition to resize, and then select the Resize/Move button to bring up the settings dialog box.





You can click-and-drag on the partition graphic to set the partition size or type a number in the New Size box; it measures in megabytes so you want a number in thousands for gigabytes. Tab out of the box to update the Parted dialog. When you're happy, click on the Resize/Move button (bottom-right) to confirm your settings. Nothing happens until you click on the Apply button in the main window.

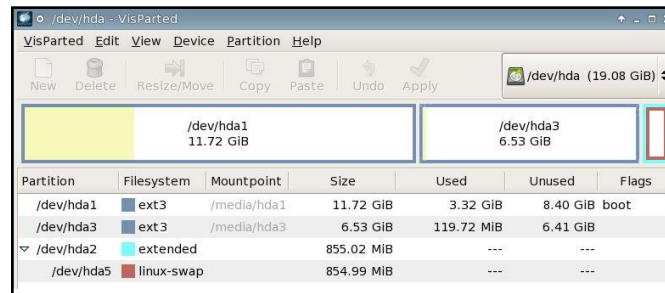


This may take a while. Each section in the progress box is expandable so you can see what's happening at every stage.

2. Create a new partition in the freed space

Still in Parted, select the New option and specify your partition for the new /home. It uses the same dialog box.

Hint: stick with one type of filesystem. If your main partition is ext3 – which is a good safe choice – then create the new partition as ext3. If you're on ext2 or Reiser, keep the new partition the same. All the Parted versions show the partitions colour-coded by type on-screen.



Note the partition names, making sure you know which is the old and the new. In my example

`hda1` is `oldhome`

`hda3` will be the `newhome`

3. Mount old and new partitions

Quit Parted. We're still using our

Live CD session and we'll move things around under the temporary filesystem it creates. Open a terminal; make a new directory as a placeholder, then mount the new partition under it:

```
sudo mkdir /mnt/newhome
```

```
sudo mount -t ext3
/dev/hda3 /mnt/newhome
```

Then do the same for your main filesystem partition:

```
sudo mkdir /mnt/oldhome
```

```
sudo mount -t ext3
/dev/hda1 /mnt/oldhome
```

We need to use `sudo` for most of these commands as they need root permissions to run.

4. Move the old home into the new home folder/partition

Change directory into to the `oldhome` mountpoint:

```
cd /oldhome
```

Since the “/home” directory will have hard links, soft links, files and nested directories, a regular copy (`cp`) may not do the job completely, so we'll use a



different method. Take a deep breath:

```
sudo find . -depth -print0 |  
sudo cpio --null --sparse --  
preserve-modification-time -  
pvd /mnt/newhome/
```

What this does is to string two commands together:

`find` is a native command that follows the pattern 'find <where-to-look criteria> <what-to-do>.'. The period is the end of the <where> clause, so by default look at everything in the current folder (remember we're in the `/oldhome/home` folder structure).

`-depth` says search all the way to the lowest level of the folder tree

`-print0` is to include file names with spaces

The pipe '|' redirects the output of the find to be the input for the cpio command which always takes its instructions from a prior command.

So:

`cpio` is the copy command

`--null` expect to receive filenames containing spaces

`--preserve-modification-time` keeps all the 'last modified timestamps' intact through the copy process.

Then:

`p` is for pass-through or 'by-pass the archive step' and copy direct to destination

`v` is verbose - list the files copied on-screen;

`d` specifies make-directories - create the corresponding folders in the destination folder.

Finally the `/mnt/newhome/` is the destination folder for the copied files.

This copies everything while preserving the last modification timestamps.

5. Unmount the /newhome new partition

Having copied what we need, we unmount it in order to re-mount it in the right place later.

```
sudo umount /mnt/newhome
```

6. Rename the old /home as a safe backup

Make sure everything has moved cleanly before this step! The folder name `/home` is a significant reserved name in the filesystem and we need to rename the old `/home` so that our regular Ubuntu session can't mount it when we reboot - we want it to use the new one:

```
sudo mv /oldhome/home  
/oldhome/home_backup
```

The move command 'mv' is a shorthand way to rename a file or folder. The original home is still there under a different name. Nothing deleted yet.

7. Mount your new home

Create a new placeholder in the filesystem where the new `/home` will be mounted:

```
sudo mkdir /oldhome/home
```

Mount the new home under this placeholder:

```
sudo mount /dev/hda3 /home
```

You should find all your



personal files looking exactly as they did before. This is fine and dandy for the Live CD session, but now you have to make this permanent for when you reboot into your regular Ubuntu desktop. Otherwise the new home won't be mounted and you won't see your Ubuntu desktop!

9. Modify fstab to make things permanent

We have to modify the `/etc/fstab` file. Fstab is the File System Table, the quick lookup the Ubuntu kernel uses like its school register to see who's in class, what their names are and where they sit, except fstab lists drives and partitions, not school kids. The command:

```
sudo gedit /etc/fstab
```

opens the Gedit text editor so you can add the line for your new partition:

```
/dev/hda3 /home ext3  
nodev,nosuid 0 2
```

This line essentially says 'mount `/dev/sda3` under the mountpoint `/home`,' with some

options. Amend this for your partition name and filesystem.

If Gedit gives you trouble saving this change, then my fall-back is a character-mode text editor such as Vi or Nano, which are on the Ubuntu Live CD:

```
sudo nano /etc/fstab
```

Go to the bottom of the file, add the line, and then save and quit -- the key-strokes are control-o, enter, control-x.

10. Reboot computer and verify

Close the Live CD session, then reboot into your regular Ubuntu session. Make sure everything is working right, `/home` is mounted where we specified, and all folders are accessible.

11. Remove the old home

You've now got two copies of home on your system, so if you're satisfied the new one is good, clear out the old:

```
sudo rm -r /old_home
```

This deletes the original home folder and contents.

What if it doesn't work?

There are two real possibilities:

1. You messed up the find | cpio copy command and not everything ends up where it should; the filesystem can't mount what it can't find!

Solution: *Using the live CD, reboot to a live session, manually mount both old and new, and compare and check the contents. You may need to back out and run the copy again.*

2. You messed up your `/etc/fstab` and didn't configure it correctly - I have done this.

Solution: *Using the live CD, reboot to a live session and open the `etc/fstab` file again. Check that you specified the right filesystem type - ext2, ext3 or Reiser. Check the device name according to your partitions - is your machine using `sda` or `hda`? Is the disk `a`, `b`, `c` or some other letter? Have you got the partition number right? Check the mount options - try 'defaults' in place of the `nodev,nosuid` options, as in:*



```
/dev/sdb2 /home ext2
defaults 0 2
```

Of course, item #3 means you still can't identify the problem, in which case recovery is required.

Boot up the live CD, go to a terminal, and type:

```
sudo mkdir /recovery
```

```
sudo mount -t ext3 /dev/hda1
/recovery
```

```
sudo cp -R
/recovery/home_backup
/recovery/home
```

```
sudo cp
/recovery/etc/fstab_backup
/recovery/etc/fstab
```

And relax...

There it is: */home* on its own partition. You can do the same for any part of your filesystem if you want to segregate the contents - just

don't think this takes the place of backups; regular backups are still crucial.

Robin Catling occasionally earns money as a project manager, business analyst and technical trainer. He also coaches fencing in the New Forest, Hampshire, England.

DOWNLOAD 8.04



ubuntu
www.ubuntu.com



kubuntu
www.kubuntu.org



xubuntu
www.xubuntu.org



HOW-TO

Written by Daniel Lamb

CREATE YOUR OWN SERVER - Part 7

We are now going to install eGroupware onto your server. This will give us a groupware server which can function like Exchange by connecting an email client such as Thunderbird to it via IMAP, and connecting Sunbird to the calendaring service via icalsrv. First of all, we will need to copy icalsrv into the eGroupware installation folder. To do this, use these commands:

```
wget
http://downloads.sourceforge.net/egroupware/eGroupWare-1.4.004.zip?modtime=1208301229&big_mirror=1
```

```
unzip eGroupWare-1.4.004.zip
and now cp eGroupWare-1.4.004/icalsrv
/usr/share/egroupware -r
```

Now we can access the installer. In this example, we'll point to:

<http://yourserver/egroupware/setup/>.

The script will run through some pre-installation tests. Some of the items will pass and some will have warnings.

Click the 'continue to the Header Admin' link at the bottom to continue. You should now be on the setup page. The 'Server Root' and 'Include Root' should be correct. You can leave the admin user set to 'admin' and create a password. This will be the account you use to login to the header manager. Change 'Persistent Connections' to 'False'. Scroll down to the database information section, and enter the information for the database you created in step #1. In this example, we'll use the following information:

DB Type: **mysql** - Stays the same.

DB Host: **localhost** - Stays the same.

Skip the DB Port field

DB Name: **egroupware**

DB User: **egroupware**

DB Password: **mypassword**

This should be setup via mysql server settings within webmin.

Choose a username and password for the 'Configuration User'. This is the account you'll use to manage the configuration. For this example, we'll use the same username and password as the header manager.

Click the 'Write config' button to create the header file. You should get a screen saying that your header file was created.

You should now be on the eGroupware login page for the control panel. Enter the admin information into the Setup/Config fields to login to the setup control panel.

Click the 'Login' button to continue. You should now be on the setup screen for your eGroupware. It will tell you that the database is working but you

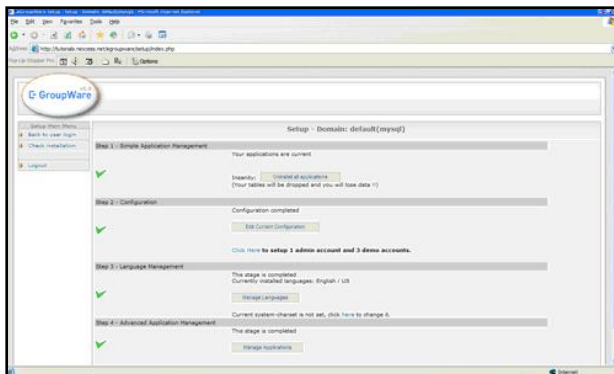


don't have any tables installed.

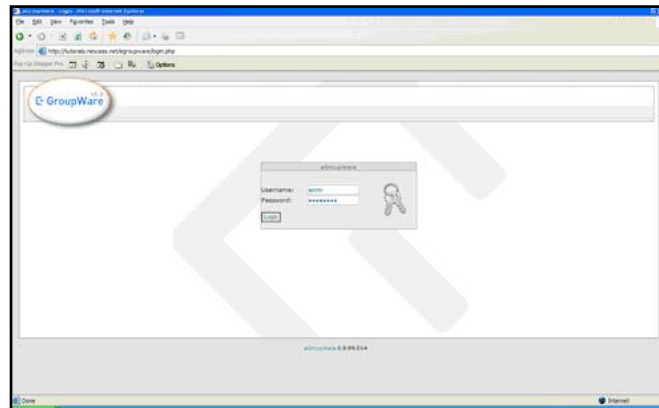
Click the 'Install' button to create the core tables. The script will create the core tables. If you don't receive any error messages, then it was successful.

Click the 'Re-check My Installation' button to continue. The setup page will refresh and you'll see that all of the stages have been complete.

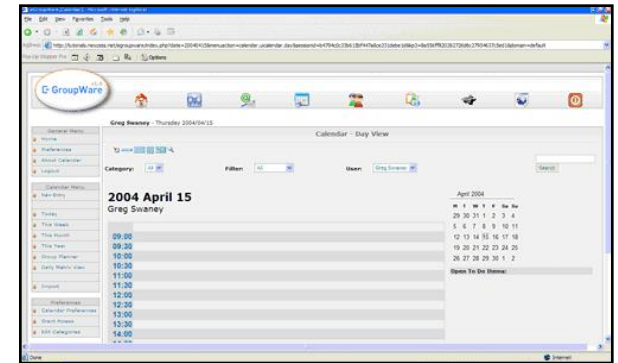
Click on the 'Click here to setup 1 admin account and 3 demo accounts' link to continue. Enter the information you would like to have for your admin account. Check the 'Create demo accounts' checkbox to create the demo accounts.



Click the 'Save' button to save these settings. You should now be back at the eGroupware setup page. Click the 'Back to user login' link at the top left of the screen. If you get an error message saying that the lock function failed, create a support ticket on the help page with the name of your database, and lock access will be granted to your database. Refresh the page once lock access has been granted. You should now be at the login page. Enter the information you created for your admin account.



Click the 'Login' button to login to your eGroupware. You should now be at the admin control panel for your eGroupware management system. eGroupware is now installed.



Next month, we will discuss adding users and permissions on eGroupware, as well as any other issues anyone has with the install. Email Daniel with what you'd like to see done next with the server:

daniel.lamb@openyourwindows.com

Daniel Lamb owns and runs *Flonix IT Solutions* and is based in Perth, Scotland. He is also involved in a number of open source projects such as *Moon Secure AV*, *Kantaris Media player*, and *open live support*.

He is also a committed Leeds United fan.



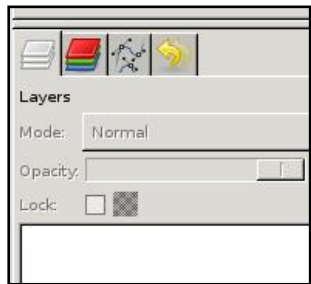
HOW-TO

Written by Ronnie Tucker

USING GIMP - Part 4

This month, we will discuss probably the most powerful feature of GIMP: Layers. If you can grasp the concept of layers and work them to your advantage, you can create anything.

First, let's make sure we have our layers window showing and ready to use.

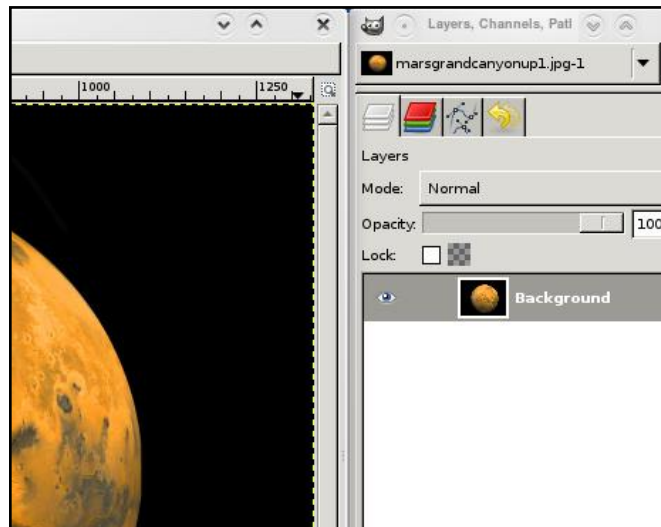


If you don't have the layers tab available to you, click File > Dialogs > Layers in the main menu.

Here's how layers work: think of each layer as a transparent sheet of plastic. The idea is that you draw all your different things on separate sheets of plastic then stack the plastic sheets in a particular order to achieve your result. Similar to how an animator

works. The background is on one sheet, the character on another sheet and any foreground details on a third sheet. Stack them properly and you will have the character with the foreground on top of it. Same with GIMP layers.

If you open an image in GIMP, and display the Layers tab (or window), you will see that your image is displayed as a single layer with the name 'Background'.

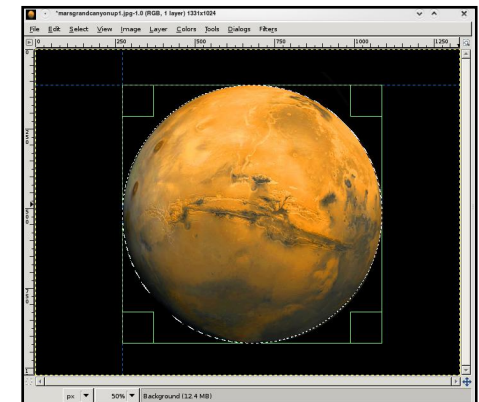


Below the list of layers, you will see several icons. Think of these as shortcuts to menu options.



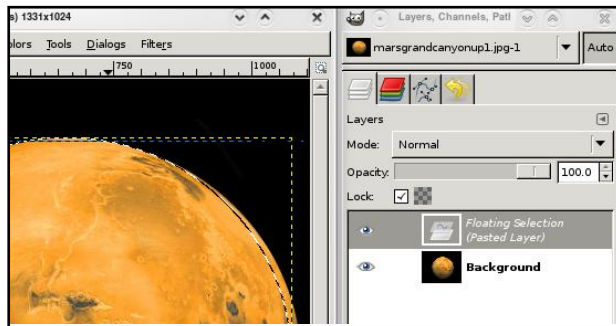
From left to right they are: Create New Layer, Raise Layer, Lower Layer, Duplicate Layer, Anchor Layer and Delete Layer. Those are pretty self explanatory.

Using the selection tools from last month's article, I'm going to use the circle tool to select the planet.

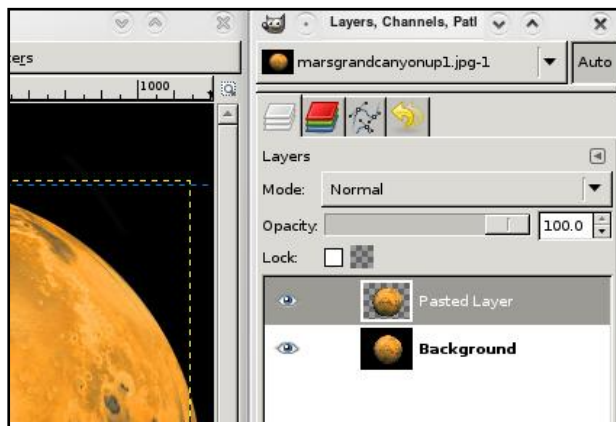




And from the menu choose Edit > Copy, then Edit > Paste

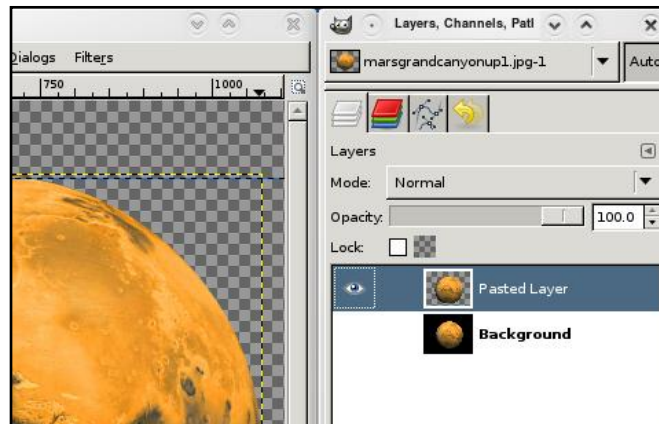


You can see that I now have a new layer (named 'Floating Selection'), but it needs to become permanent, so click the New Layer icon. It now has a preview icon, and is automatically renamed to 'Pasted Layer'. If you want to rename a layer, just double click on its name, and enter a new name, followed by the Enter key.



If I hide the original 'Background' image, you can see that the selected, copied and pasted planet is now on its own, completely separate, layer. Our first new layer!

TIP: You can copy from one image and paste in to another image.

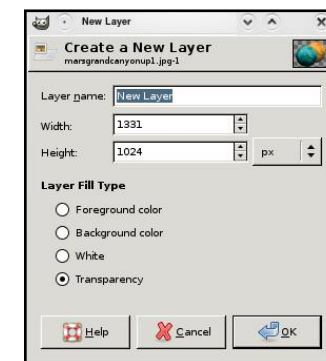
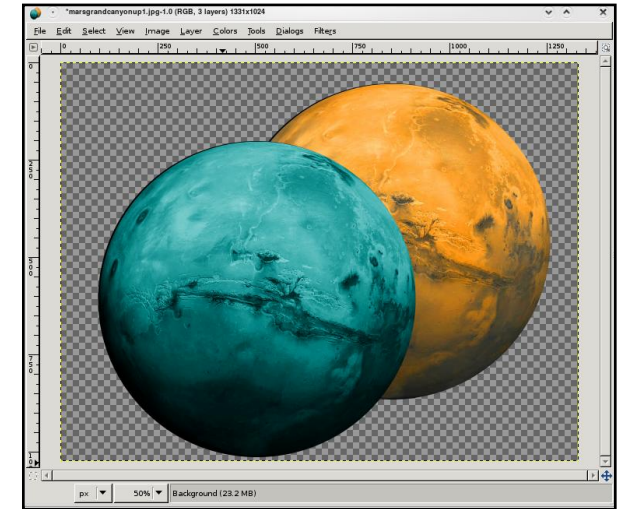


Don't worry about the two-tone, chess-board pattern in the background. It's just there to signify complete transparency.

So now, with the planet selected, I'll click the Duplicate Layer icon to give me a second planet. To move the layers, you use the Move tool, select the layer you want to move, then click and drag it into place. I'll use some of our color altering techniques to change the color of one planet to make it easier for you

to differentiate between the two planets.

TIP: If you have two images open, you can drag and drop layers between them!

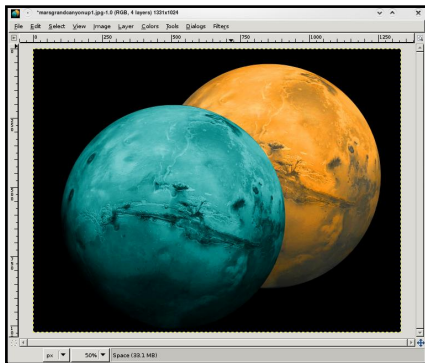


Let's create a new blank layer. A new layer is created above the layer you are currently on, so I'm going

to select my (hidden) Background layer and then click the New Layer icon. Up pops the New Layer window (above).



From top to bottom: We give the layer a name (preferably something descriptive! I'll call mine 'Space'); Width and height we won't bother with just now, as we want the layer to be the full size of the image; Layer Fill Type we will leave as transparent. You can choose white, or one of your foreground or background colors if you wish. Now, I'll make my foreground color black and fill my 'Space' layer with black color.



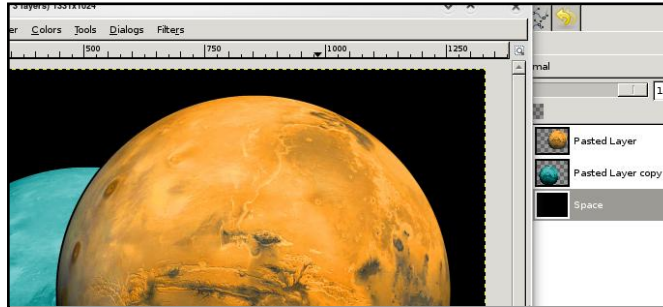
So now I have two planets out in space. I don't need

the original image any more, so I select that layer and click the Delete Layer icon.

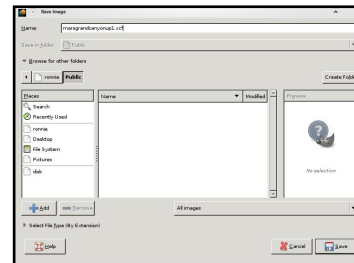
So what if I wanted the orange planet in front of the blue planet? I click the orange planet layer, then click the Raise Layer icon.

Think of your layers as going from bottom to top. So first, GIMP

lays down the 'Space' layer, on top of that it puts the blue planet layer, and, finally, on top of that the orange planet layer.

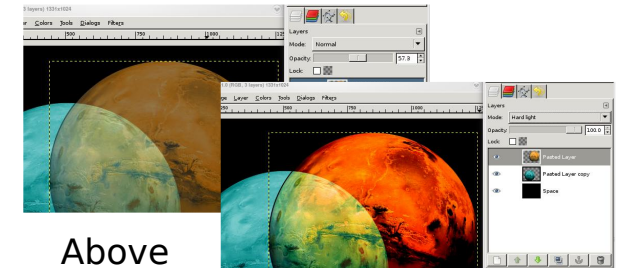


When saving, you want to make sure you save your image in the GIMP format (XCF). The next time you load the image you will still have all the layers intact for manipulation. Saving as JPG or PNG will flatten the image and you will lose your layer information, so always keep an XCF version! To save, you click File > Save As from the menu, and make absolutely sure the filename ends in .xcf (right).



Many effects can be applied to layers to make them even more powerful. Try moving the Opacity slider (above the list of layers).

Each layer can have one 'mode' applied to it. These are listed in the drop-down menu above the Opacity slider. Have a play with these effects. You can get some nice looking accidents with these modes.



Above is the basics of layers. No doubt, we'll talk more about them in future articles, but, for now, have a play with copying and pasting, raising and lowering layers, and moving them to create a pleasant composition.

Next month, we'll delve in to measurements (and measurement types), rulers and cropping images.

Ronnie Tucker is Editor of *Full Circle* magazine, a proud Ubuntu user, and part-time artist whose gallery of work can be seen at www.RonnieTucker.co.uk.



HOW-TO

Written by Damon Rios

GRUB 101

For a variety of reasons, you may need to repair your master boot record (MBR).

Some of the common reasons include:

- a) Installing or reinstalling Windows after you have installed your Linux system (you will boot right into Windows, without an option to use Linux).
- b) Using PartImage to clone partitions to a new drive, as explained in issue 12 (you will get an error message, usually “No operating system found”).
- c) Installing another Linux distro, and forgetting to configure the bootloader to not overwrite the MBR, something I typically do (you will get the new bootloader, which may not have your Ubuntu system as an option).

Repairing GRUB

Not to worry, if you have a live

CD which contains GRUB. In eight steps, you will have your GRUB menu back.

Steps 1 & 2:

Boot the CD and open a terminal.

Steps 3 & 4:

Type:

```
grub
```

Then:

```
find /boot/grub/stage1
```

The output of the find command is important, as you will use it in Step Five. Alternatively, you could mount your partition, open `/boot/grub/menu.lst` (from the hard drive, not from the root of the live environment), scroll down to the uncommented line that says “`root (hdx,x)`”, close, `umount`, and `continue`. If you know which partition you need, you can skip this step.

Steps 5-8:

Type:

```
root (hdx,x) <output of  
find command>
```

Then:

```
setup (hd0)
```

Followed by:

```
quit
```

And finally:

```
reboot
```

What do steps 5 and 6 do? Step 5 tells grub what partition to boot from, and step 6 writes that information to the master boot record of the first hard drive.

Modifying GRUB

When you reboot into your system, open a terminal and enter:

```
sudo <your favorite editor>  
/boot/grub/menu.lst
```



MY STORY

Written by Travis Moore

UBUNTU SAVES THE DAY

Below are two example entries (for both Windows and Linux) that are included in the menu.lst file.

```
# title      Windows
95/98/NT/2000
# root      (hd0,0)
# makeactive
# chainloader +1
#
# title      Linux
# root      (hd0,1)
# kernel    /vmlinuz
root=/dev/hda2 ro
```

Copy and paste to the bottom whichever you need, uncomment all of the lines (remove #), change the line "root (hd0,1)", as needed, and give it a try by booting into your other partition(s).

Damon Rios is finishing a Baccalaureate degree in Computer Information Systems. His area of specialization is networking, including setting up and maintaining servers, but he cannot stand programming. He has been using Linux (Ubuntu) for about a year, and has contributed to FCM as both a writer and a proofreader.

Ubuntu saves the day! As clichéd as it sounds, Ubuntu has, once again, won my heart. I was at a friend's house, who at the time was doing a travel agency party/meeting. Her parents are starting up a travel agency website, which should be making nearly \$1,000 (~£500) a week. Her mom, the main business woman, was fruitlessly trying to get her laptop to work with a VGA to HDMI converter, then a HDMI to DVI. Something was being lost in the middle of that, because all we were getting was the disappointment of a black screen. I said, "I know how to fix that."

I brought my laptop with a graphics card suitable for HDMI to DVI work. Of course, it was running Hardy Heron, and I also had Envy installed so that my Nvidia card would play nicely. I connected the HDMI cable, set it to TwinView, and it worked! Then I ran into another problem: the presentation that was

going to be displayed was a Windows Executable file (not a plain PowerPoint Presentation). Thinking quickly, I installed Wine and was able to get the presentation working in a flash. Then another issue: the presenter wanted to use a clicker, you know, one of those wireless things that allow you to navigate presentations and such without having to use the mouse and keyboard. Well, I thought my luck was out, but I plugged it in anyway. I couldn't believe it, it worked! Then came a DVD, which I had already taken care of by installing libdvdcss.

To make a long story short: the presentation went well. Hardy Heron, combined with Envy and Wine made all presentation problems vanish. I thank the teams who work on these projects.



MY STORY

Written by Andrew Min

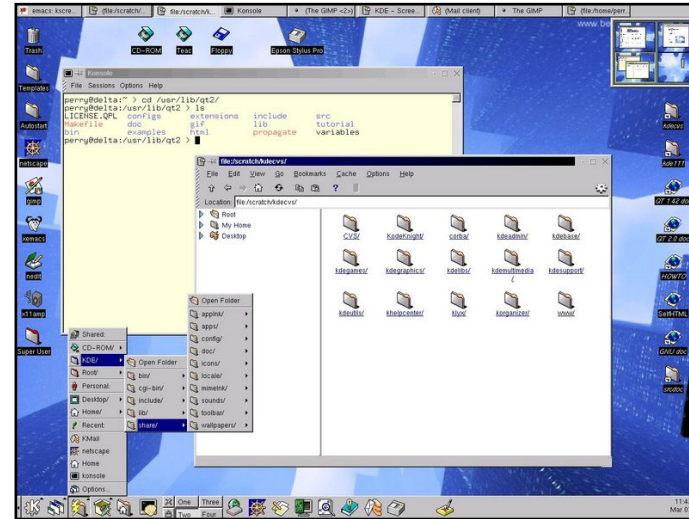
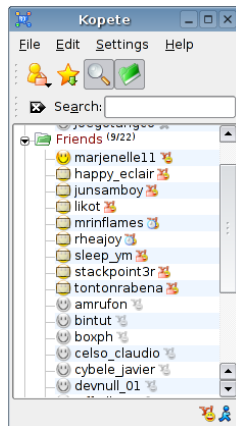
FROM MICKEY'S ABC TO KUBUNTU

I'll admit it. I was always a computer geek. Ever since I threw a tantrum over my Mickey's ABCs game — Mom wanted me to get off, but I didn't — I've been involved with computers. But I really started getting into them when I discovered Microsoft Publisher XP, a program that tried to make desktop publishing easy for users. It never really took off, but I loved it. One day, I found out how to make a Web page. Then I decided to go to the library to learn how to create a better Web page. I picked up *Dave's Quick 'n' Easy Webpages* [1], and fell in love with programming.

As I fell more in love with computers, I found more programming books. One day in 2003, I discovered an old O'Reilly book about Linux (can't remember the exact title). Unbeknownst to me, it had been written years before. I took a look

at the book. It depicted a system that looked like DOS and included some screenshots of what must have been KDE 1.0 (right). I decided then that I didn't want to run Windows 3.1.

A few years later, I had gotten into the instant messaging craze. However, I didn't want an official client. I wanted a client that ran AIM, ICQ, MSN, Yahoo and Skype, and included voice chat for each. And I found one: **Kopete** (left). That was when I realized that it was only for Linux. Then I remembered hearing about something called VMWare being able to run Linux inside of Windows.



So I searched the *Virtual Appliance Marketplace* [2] for "KDE" and found an openSuSE image. I downloaded it, ran it, and fell in love with KDE.

There was a problem, however. I didn't want to replace Windows yet. And the virtual machine wasn't working, since I had only 512MB of RAM. I experimented with running Puppy Linux from a USB drive, but I gave up in disgust when I saw the JWM window manager. I also tried installing Slax, but back then it was much harder to install to a hard drive, and I gave up as well.

Then in 2006, I found an article in PCWorld about Ubuntu.



I read how easy it was to use, and decided it was for me. But there was one problem. I hated the brown theme. Then, I found out that there was a KDE sibling called Kubuntu. I immediately



ordered five CDs of Dapper Drake (right) from Shiplt.

It took months for Shiplt's package to arrive. When it did, I was so nervous that I kept putting it off. I finally summoned enough courage to install it on a Saturday in February 2007. Before I did, however, I learned that Edgy Eft had been released. I burned a CD and installed Kubuntu 6.06. It wiped my hard drive. Happily, I'd had the foresight to back up, so I reinstalled Windows XP and Kubuntu. In the process, I found out that Windows XP gets a lot faster if you reinstall it. But soon, I

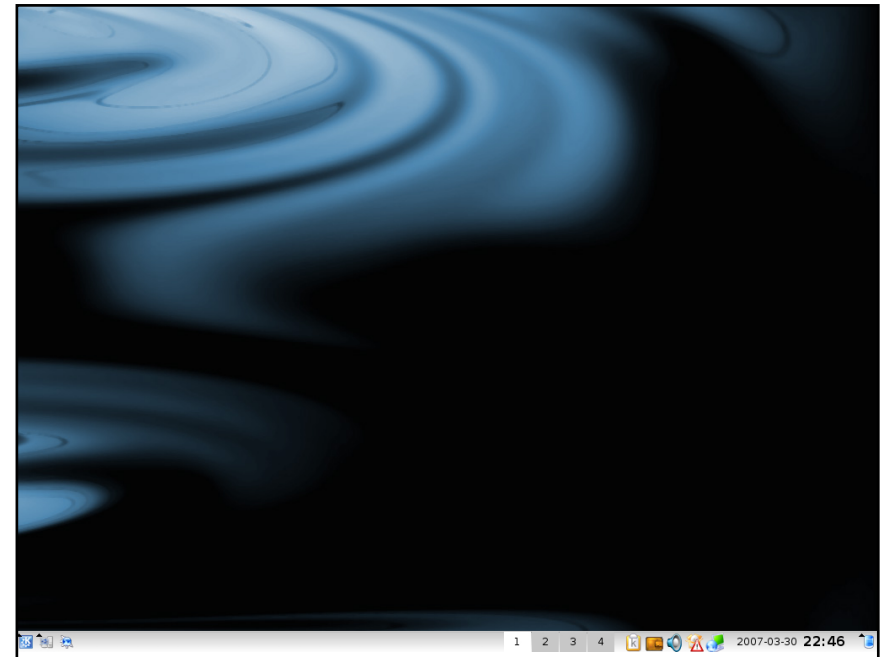
wasn't worried about Windows. Once Kubuntu was installed, I fell in love with it. The package manager (even SuSE's YaST isn't as good as aptitude), the stability (no crashes every five

minutes), and the speed (contrary to my own belief, Kubuntu actually was faster than XP) combined to make it an operating system worthy of replacing Windows. Since then, I've tinkered around with different operating systems, but they all had problems -- MEPIS used outdated software, SuSE used an annoying YaST package manager, and Freespire was just all-round, bad. Kubuntu ain't perfect, but it's the best I've seen so far.

Oh, and ironically, I don't even use Kopete any more.

- [1] <http://www.redwall.org/dave/davesbook.html>
- [2] <http://www.vmware.com/appliances/>

Andrew Min is a Christian, an American, a student, and a huge Kubuntu fanboy. Find out more about him at <http://www.andrewmin.com>





REVIEW

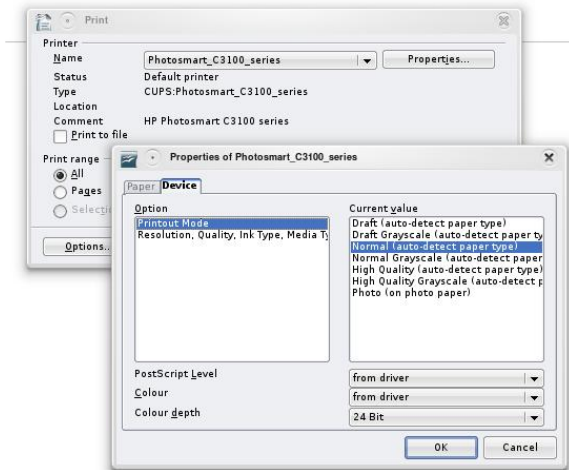
Written by Ronnie Tucker



HP PHOTOSMART C3180 PRINTER



After powering on the printer and plugging in the USB cable to my PC, Kubuntu Hardy automatically detected the printer, told me it was a C3100 series from HP, and then displayed a printer icon (below) in my tray and also a bubble telling me it was configured and ready to use! It really was that easy. Clicking the printer icon gives access to the print jobs.



Having done my research for a nice, cheap, Linux-compatible printer, on Google and Ubuntu Forums, I decided upon the HP Photosmart C3180.

It's an 'all-in-one' printer, meaning it can print (like a normal printer), scan (like a flatbed scanner) and copy (like an office photocopier). I should also mention that the copy function can be used even while the PC is off. Unlike the more expensive models, this one does not do fax.

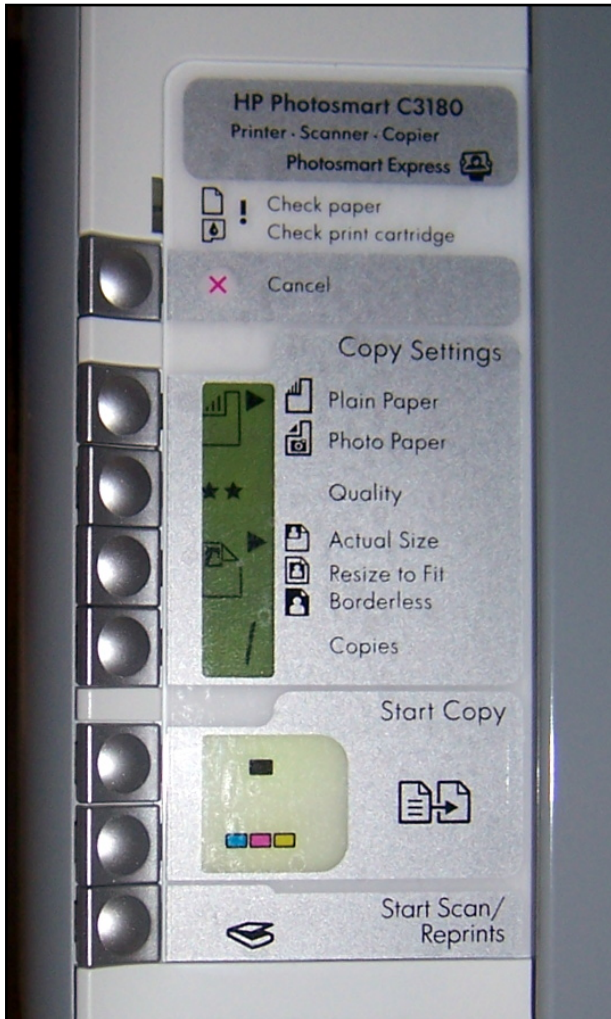
After installing the black and color cartridges (which come with it), the printer automatically spat out a test page. This showed that the various colors were working effectively, as was the rest of the printer.

Next, I opened a document in OpenOffice. I clicked print (above right) and it worked! Easy as pie. Then I decided to copy one of the pages I'd just printed. I put the paper on the scan area and pressed the copy button. It worked! By now, I was getting suspicious -- this was just too good to be true.

Getting the printer to scan caused me a few moments of head-scratching, but this was because I didn't have SANE installed. SANE is a scan application that effectively sits between other applications and the scanner. I installed and loaded up SANE, did a preview scan, selected an area, clicked scan and that was it! I loaded up GIMP and, after installing SANE, it now had the necessary option to acquire from the scanner.



Looking at the printer itself, it has two main lights on top which alert you when the paper is out or the ink is low. It also has a number of buttons on it:



The copy buttons give you quick access to altering the paper type, the copy quality, the copy size, and the number of copies to produce. Below those are two more buttons for copying in color or in black. The last button is for scanning.

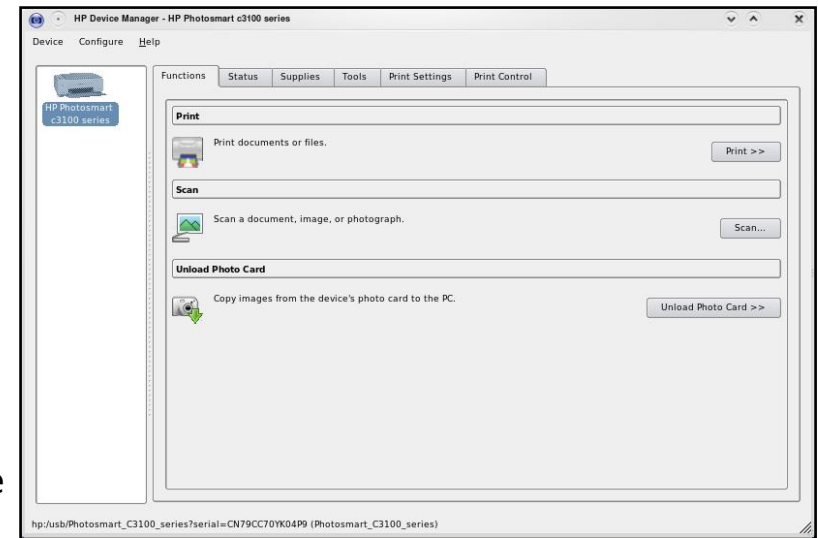
On the front of the printer are several card slots:



These work just like a card reader, so my USB card reader is now redundant. Since there is no screen (to view your photos) on the C3180, you press the thumbnails button on the front of the printer (it flashes when you insert a card), and out will come a page (or pages) with thumbnails of your photos. Now, this is where we seem to find a Windows/Mac only option. The

method is to fill in the page to select the thumbnails you want printed as photos, and then put the page into the scanner to enable it to detect (using OCR I assume) what you filled in on the page, and to print your request. How can this be done in Linux? I have no idea. The card slots still allow you access to your photos via GIMP or whatever photo album software you use.

I'm not sure if it was always there, or added during detection, but I spotted an HP Device Manager (below) application in my Kubuntu menu.



This gives access to the main print, copy, and scan functions (with a handy function to let you queue up files to print), but also to status and supply reports (ink levels), tools (test pages, clean and align the cartridges), and print settings (for print quality).

I really can't fault the printer at all. It installed so simply that I was suspicious of it. I tried all the basic features (printing, scanning, and copying) and they worked easily and flawlessly.

I bought my HP C3180 from eBuyer.com for £35 (~\$70). New ink cartridges are approximately £15 each (~\$30).



HP Photosmart C3180 specs:

Device Type - Copier / printer / scanner

Printing Technology - Ink-jet - colour - photo

Monthly Duty Cycle (max) - 1000 impressions

Office Machine Features - Print from memory card

Width - 43.4 cm

Depth - 29 cm

Height - 16.2 cm

Weight - 5.1 kg

Localisation - Western Europe

Memory - 32 MB

Max Supported Memory 32 MB

Supported Flash Memory - Memory Stick, CompactFlash, SD Memory Card, MultiMediaCard, xD-Picture Card, Memory Stick Duo

Max Copying Speed - Up to 22 ppm (mono) / up to 20 ppm (colour)

Max Copying Resolution - Up to 600 x 600 dpi (mono) / up to 4800 x 1200 dpi (colour)

Max Document Enlargement - 400%

Max Document Reduction - 50%

Maximum Copies - 50

Inkjet Technology - HP Thermal Inkjet

Max Printing Resolution - Up to 1200 x 1200 dpi (mono) / up to 4800 x 1200 dpi (colour)

Max Printing Speed - Up to 22 ppm (mono) / up to 20 ppm (colour)

Ink Cartridge Configuration - 1 black cartridge, 1 colour cartridge (cyan, magenta, yellow)

Colour - 4 or 6-ink

Ink Type - HP Vivera Inks

Scan Element - CIS

Optical Resolution 1200 x 2400 dpi

Interpolated Resolution - 19200 x 19200 dpi

Grey Scale Depth - 8 bit

Colour Depth - 48 bit

Max Original Size - 215 x 297 mm

Original Type - Sheets

Min Copy Size - 77 x 127 mm

Max Copy Size - 215 x 610 mm

Min Copy Weight - 75 g/m²

Max Copy Weight - 236 g/m²

Supported Media Type - Transparencies, envelopes, plain paper, cards, labels, iron-on transfers, photo paper

Standard Capacity - 100 sheets

Output Trays Capacity - 50 sheets

Speed Details - up to 22 ppm (A4) - B/W draft ; up to 20 ppm (A4) - colour text and graphics draft



MOTU INTERVIEW

Taken from behindmotu.wordpress.com

MATHIAS GUG

Behind MOTU is a site featuring interviews with those known as 'Masters of the Universe' (MOTU). They are the volunteer army of package maintainers who look after the *Universe* and *Multiverse* software repositories.



Age: 28

Location: Montreal, Canada

IRC Nick: mathiaz

How long have you used Linux and what was your first distro?

The first time I saw linux was in 1997, Redhat IIRC. The first time I downloaded it was in September 1999, Debian. But I gave up after a couple of weeks. I came back during summer of 2000 with Mandrake Linux and the 2.4

kernel. I've never left since then.

How long have you been using Ubuntu?

I installed Ubuntu one and half years ago, it was Xubuntu 6.06 IIRC.

When did you get involved with the MOTU team and how?

I was hired by Canonical as the first member of the Ubuntu Server Team last May. I started packaging AppArmor and other server-related software — which led me to become a member of the MOTU team.

What helped you learn packaging and how Ubuntu teams work?

I'm using the packaging guide from help.ubuntu.com, the Debian New Maintainer Guide, and the Debian Policy. For processes, I just keep referring to wiki.ubuntu.com where

they're all outlined. And last, but not least, the irc channels (#ubuntu-motu and #ubuntu-devel), are great resources. I always find someone to help me there.

Favorite part of working with the MOTU?

Being part of a great team trying to deliver the best of the free software world. There are lots of interesting challenges when it comes to packaging - you get to learn how things work under the hood.

Any advice for people wanting to help out MOTU?

Start simple, start small. Pick one bug or one package and try to fix it. Ask for sponsorship, and you'll learn a lot of things in no time.



You have been working a lot in the Server Team, what can MOTU do to better the Ubuntu Server experience?

One of the projects I'll try to work on is a better packaging framework for web applications. So that such application can be added to the universe easily and in a consistent manner.

Any plans for Hardy Heron?

Most of them are in the server area - I'll keep on working on security with AppArmor. Server hardware testing is another area I'm interested in.

Favorite quote?

"I am not an Athenian or a Greek, but a citizen of the world."

Plutarch quoting Socrates

What do you do in your spare time?

Among others things, I go swing dancing several nights a week, both in Montreal and in other places in North America. I'm also a big traveller: I've just returned from an eight month backpacking experience in Asia covering Mongolia, Tibet, Nepal and India.

The screenshot shows the Ubuntu Forums homepage. At the top left is the Ubuntu logo and 'forums'. A search bar is on the right. Below the logo is a navigation menu with 'User CP', 'Forum Help', 'New Posts', 'Search', 'Quick Links', and 'Log Out'. The main content area features a section titled 'The Ubuntu Forum Community' with a sub-section 'Absolute Beginner Talk' (155 Viewing, 20,398 Threads, 141,643 Replies) and a post 'Cron Job' by Drezard from 4 minutes ago. Below that is 'Main Support Categories' (834 Viewing, 59,182 Threads, 285,017 Replies) with a post 'HOW-TO send a message to mac...' by audwan from 1 minute ago. A list of support categories follows, including Apple Users, General Help, Multimedia & Video, Partner Repository, Sun Sparc Users, x86 64-bit Users, Desktop Environments, Hardware & Laptops, Multimedia Production, Security Discussions, System76 Support, Wubi, Desktop Effects & Customization, Installation & Upgrades, Networking & Wireless, Server Platforms, and Dell Ubuntu Support.

ubuntu forums .org

Threads: 840,650

Posts: 5,402,865

Members: 626,595

Active Members: 68,440

**Currently Active Users: 9160
(808 members and 8352 guests)**



UBUNTU WOMEN

Written by Emma Jane Hogbin



For me, the Ubuntu logo represents freedom and community. The word itself means “Humanity towards others.” Within the Ubuntu

community is a Code of Conduct (CoC) that governs our behavior [1]. It is simple and elegant. There are six main points in the code: Be considerate. Be respectful. Be collaborative. When you disagree, consult others. When you are unsure, ask for help. Step down considerately.

Recently, the Ubuntu Women discussion list had an interesting exchange about the Code of Conduct entitled “How has the Code of Conduct Helped You?” [2] [3]. The responses showed a disconnect between our eagerness to sign the code, and our apathy towards upholding it.

The Ubuntu community is full of life, and is a delight to participate in. Sometimes, though, I am not the epitome of the behavior defined in the CoC — whether it’s cracking jokes with friends in an IRC channel or engaging in passion-fuelled debate, I sometimes forget to rein myself in. When I slip, I enable others to slip too. This can start a

domino effect of bad behavior that extends much further than the original interaction. By remembering to govern myself according to the CoC, I enable others to participate in the same way. I encourage everyone to join me in reading the CoC at the beginning of every month — let’s see how far we can spread the good behavior too!

[1]
<http://www.ubuntu.com/community/conduct>

[2]
<https://lists.ubuntu.com/archives/ubuntu-women/2008-June/001594.html>

[3]
<https://lists.ubuntu.com/archives/ubuntu-women/2008-July/001598.html>

Emma Jane Hogbin builds and supports on-line communities using open source software. She lives in rural Canada and chronicles her adventures at www.emmajane.net.



UBUNTU YOUTH

Written by Uwe Hauck

The future of open source is in the young people of today; that's why this corner of the magazine is for young people or simply those who are young at heart.

I am a long-term Linux aficionado. My first contact was in the early 90s with the early versions, but that was more of an academic interest as I was studying Computational Linguistics and Artificial Intelligence by that time, and, in my department, the OS of choice was Unix.

I moved on, got married, had children, and about six years ago my interest in Linux grew again. My first contact was SuSE, but, with Feisty Fawn, I made the switch to Ubuntu.

My wife was not so much into computers at that time; she was always fearful of viruses and catching Trojans while surfing the Web. So more as a joke, I said "Why don't you try Ubuntu; it's safe, easy to use, and you'll love it". To my big surprise, she agreed, and I created a partition with Ubuntu Linux on our family



desktop PC. Sure enough, she liked it, and became a computer addict, and the perfect match for a nerd like me.

We are running four machines at the moment — all equipped exclusively with Ubuntu, with the exception of the family PC, which still has one partition for Windows XP for those 'special' games the kids like so much. But there is hope. Our oldest son (aged eight) watched my wife the other day playing her favorite game, Widelands, and asked: "can I play it too?"

First contact was made!

I use a Sony Vaio VGN-FZ31J DualCore notebook, perfectly supporting nearly everything despite the NVIDIA graphics card, which works well but still waits for the dimming feature. In addition, I couldn't resist buying an ASUS EEE PC 700 -- my sidekick in the office, and my surfboard on the couch. And it is great! Having installed Ubuntu on the EEE, I can do everything on the road. It even supports Compiz Fusion out of the box! It has become my media centre, portable video player, information centre (on the road), and much more. Even watching TV is possible with the Zattoo player or a DVB-T stick.

At home, I add a USB keyboard, mouse and a 21 inch widescreen. To my big surprise, my little EEE PC even supports 1600x1050 resolutions! As soon



as one of my kids needs a computer for their school work at home, they will get an EEE — or something similar — and for sure it will run Linux. With three kids, my reasoning is: for the price of one full-blown notebook we can afford three EEE PCs with additional keyboard, mouse and monitor. And you can always easily remove the PC from the kids room, should they spend too much time on the computer.

At the moment, my kids use an Acer Desktop PC with an AMD Dual Core processor and a triple-boot setup with Windows XP, OpenSUSE 10.1 and Ubuntu 8.04. My wife uses my 'old' Notebook, a Samsung R55 DualCore, with - you guessed it - Ubuntu, and does a lot of correspondence, planning our social involvements, surfing the Web, and, of course, playing Widelands. We use a wireless print server, so anyone in the house can print on the family printer, a Canon MP750, via WLAN.

I have added an USB drive to our WLAN router that acts as a network drive so everyone can

access our music collection and the family documents from a single source. The EEE PC and my notebook run F-Spot, so we have our collection of family photos with us all the time, and they become great high-tech picture frames in screensaver mode, flipping through our family album. I have Firefox with Foxmarks, so whatever computer I use, I have all my bookmarks with me.

Our family calendar runs on Google Calendar, and with Thunderbird, Lightning and Provider running on each computer, we all have our family dates in sync, everywhere. I can even check if my extra office hours fit with the family schedule, and I can update my business dates without having any private dates on my office computer.



And I am running GCalDaemon for Evolution on my notebook, with multisync and the Bluetooth plug-in for Sony Ericsson phones. That way I can keep the calendar and addresses on my mobile phone automatically in sync with the family calendar on Google whenever the phone comes into the Bluetooth range of my notebook.

And of course, the whole family is equipped with Ubuntu merchandise. Why? So no one can miss the fact that we are an Ubuntu family. And, through several talks, I have already convinced about five of our friends and my colleagues to give Ubuntu a try and, yes, three have made the switch, one of them completely.

Uwe Hauck is a software developer and Ubuntero, participating in translations, bug fixing, and trying to convince as many people as possible to try Ubuntu. He lives in Schwäbisch Hall, Germany, and is married, with three kids.



LETTERS

Every month we like to publish some of the emails we receive. If you would like to submit a letter for publication, compliment or complaint, please email it to: letters@fullcirclemagazine.org. PLEASE NOTE: some letters may be edited for space reasons.

In issue 13 Alessandro mentioned that his friend's laptop worked better with Ubuntu. I'm not going for any case badges here, but Ubuntu works better. At this moment I run a Ubuntu 8.04 server, Ubuntu 7.10 on my desktop and Ubuntu 8.04 on my laptop. To make a long story short, on the desktop, the HP-5L laser printer prints better in Ubuntu, the tv-tuner works seamlessly (in Windows its proprietary drivers have a sound problem), and that's not all because the sound card drivers from Ubuntu send a better signal to the speakers. And it is all for free, free as in free speech of course, but in this case it's free as in free beer.

I've been dual booting Windows and Linux since 2004 but Ubuntu got me Windows free about 6 months ago. Last month I even got a friend of mine to switch to Ubuntu 7.10 on her old PC. It's

LETTER OF THE MONTH

Writer of Letter of the Month wins two metal Ubuntu case badges!



I started using Ubuntu in June of 2006 (Dapper Drake) because I hated Windows' proprietary stuff. I got tired of not being able to fix bugs myself and not being able to get updates until Tuesday of the following week. I finally said "forget this" and went on a search. I found SUSE Linux first, but due to its non-user-friendly approach I went searching again. I finally came across Ubuntu and, of course, when I first began using Ubuntu I had a few problems - one or two compared to Windows

thousands. Then I found Ubuntu Forums and the beginner team. Those guys helped me so much! Since first using Ubuntu - until today - I have great appreciation for the Free and Open Source community and developers. Ubuntu is awesome, and I do not believe I will change because of the amazing support from the community and Canonical.

Alan Munson

just a small deed for what Ubuntu gave me instead.

Ciprian

I think a useful article for a future edition should cover the GRUB bootloader as my recent

experience proved, without this piece of software working, the computer is useless:

I got the Windows Paragon Partition Manager last week to get back space required for XP



from one of the two Ubuntu partitions - on the first laptop this worked fine, Paragon brought the message to reboot to complete which it did in the blue checkdisk screen in XP.

However in the second laptop, Paragon decided to complete within XP and on rebooting I just got a message about GRUB loading but with error 17 (whatever that means). I only got things up and running again by booting the Ubuntu CD, manually deleting the Ubuntu partitions in the setup and letting it complete to reload the boot menu. Now everything works fine again and I achieved the extra space I wanted for XP.

A few gripes I've got about Ubuntu are: the boot menu gets more and more versions added - how do I delete those that don't apply and don't exist anymore or never used?

With the latest upgrade to 8.04, the radio players don't work any more so I've given up with this as

it took me so long to sort out the players with previous versions up to 7.10 which worked.

I downloaded GParted in Ubuntu, but couldn't figure out the program to delete and resize partitions, with no help menu, and it didn't seem very user friendly like Paragon's.

Each week there's more and more space required for security fixes and upgrades in the latest 8.04 version, seems like it's averaging 80Mb a week, so eventually I

thought I'll be running out of disk space, especially as previous versions are kept in another partition automatically - so I'm sticking with XP instead for less updates, a higher resolution display, and a far less complicated way of getting programs without worrying about some meaningless file names that are going to be uninstalled if I install another program in Ubuntu. Uninstalling in Ubuntu risks disabling the whole computer without any warning notices so I've given up on this after one disaster.

I'll be back with Ubuntu when

these have been resolved, but in the meantime I'm for an easier computer experience (life) with XP, where I don't have to think that much or worry whether the laptop will reboot again after the latest changes.

Michael


Ed: *Your wish is my command. This issue ([page 18](#)) has an article regarding GRUB and it's many options.*

Just a suggestion for the magazine: how about an article explaining clearly how to deal with tar.gz, BZ2 etc. I know it is in the docs, but it is quite confusing for a beginner.

I think it would be nice and very useful for the community.

Alain

Ed: *Thanks for the idea Alain, we'll certainly take it on board and hopefully get something written up on archives in the very near future.*

 I'll be back with Ubuntu when these have been resolved...



Q&A

Written by Tommy Aalsemgeest

If you have Ubuntu-related questions, email them to: questions@fullcirclemagazine.org, and Tommy will answer them in a future issue. **Please include as much information as you can about your problem.**

Q If I download files to Linux, can I transfer them to Windows XP? If so, how? And can I run them? I use Linux Mint (Ubuntu based distro).

A Yes, you can easily transfer them - by copying the files across to your XP partition or drive from within Linux. You can access your Linux partition from within XP by installing the *ext2fs* driver in Windows.

Q When I try to watch a video in Firefox (in Hardy Heron), I get audio but no video. Any idea how to fix this?

A Firefox is probably missing a plugin. Take a look here: <http://ubuntuforums.org/showthread.php?t=766683>.

Q What should I do when I get the error: *fsck died with exit status 8*? Nothing appears to be broken; however this error is holding up my boot sequence, until I hit Ctrl+D to continue.

A You can fix it by running *e2fsck* from the live cd, or by running it with the -f flag, like this:

```
sudo e2fsck -f /dev/sda1
```

Q I have downloaded a shell script file. When I try to open these files, nothing happens. What program should I use to open these files?

A Set the SH file permission first to executable:

```
chmod u+x  
/path/some_linux_installation.sh
```

Then run it with:

```
sh  
/path/some_linux_installation.sh
```

or:

```
./some_linux_installation.sh
```



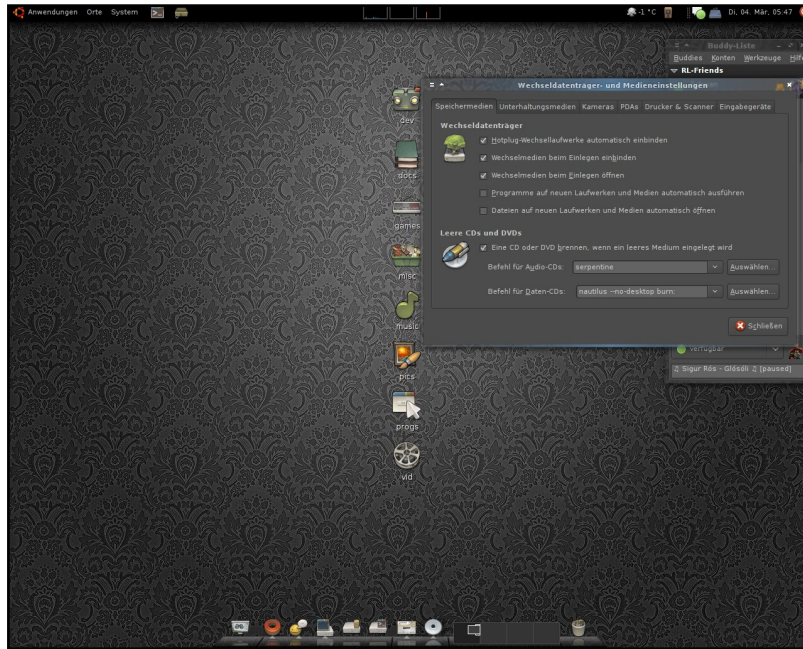
If I download files to Linux, can I transfer them to Windows XP?





MY DESKTOP

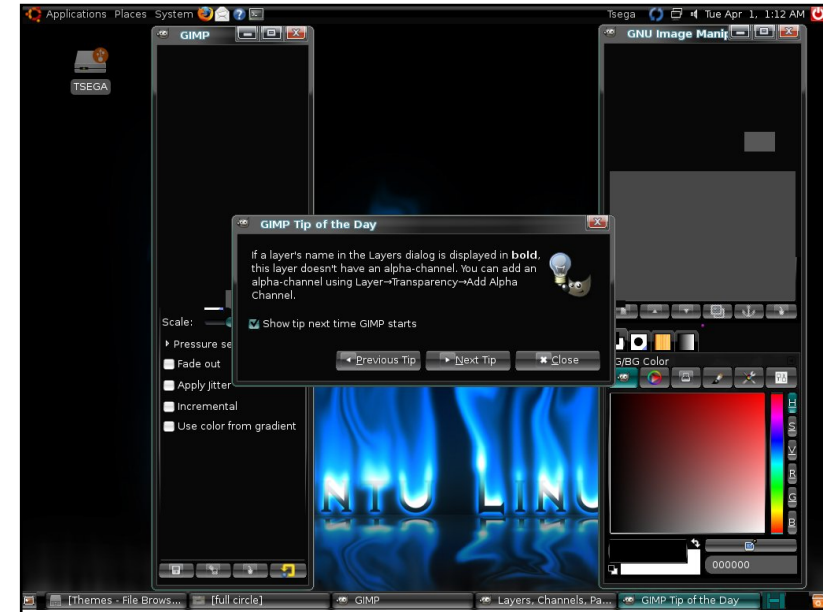
Your chance to show the world your desktop or PC. Email your screenshots and photos to: misc@fullcirclemagazine.org and include a brief paragraph about your desktop, your PC's specs and any other interesting tidbits about your setup.



I've used Ubuntu since Dapper, and now use Gutsy with Compiz Fusion and Emerald - on a Core 2 Duo 2x2.2 GHZ with 1GB of RAM and an nVidia GeForce 8600GT. It runs like a charm. I plan to upgrade to Hardy as soon as the Final hits the Servers.

I used the wonderful looking *Buuf* icon theme from gnome-look.org. The Emerald theme was mixed using System-Colors, the dockbar is the Avant Window Navigator. For the Wallpaper, I went to theinspirationgallery.com, and found a pattern, and edited it to a Victorian-style dark background image.

Björn Haubrich



I am using a 10 year old Daewoo, Pentium III, 1.0GHz, 384 MB RAM, 20GB HD. It has so many hardware problems that it takes several tries to properly start Ubuntu. But once it starts, the machine becomes alive! I mean, I can do so many things with it I don't want to let it go. I enjoy Ubuntu, and I love that I have the option of changing its appearance.

My theme is a custom collection made up of the following: Black Plastic (for controls), Vista Mix Dark (for window borders), and Human Default (for icons). I found everything, including the background, at gnome-look.org

Tsegelassie Tesemma



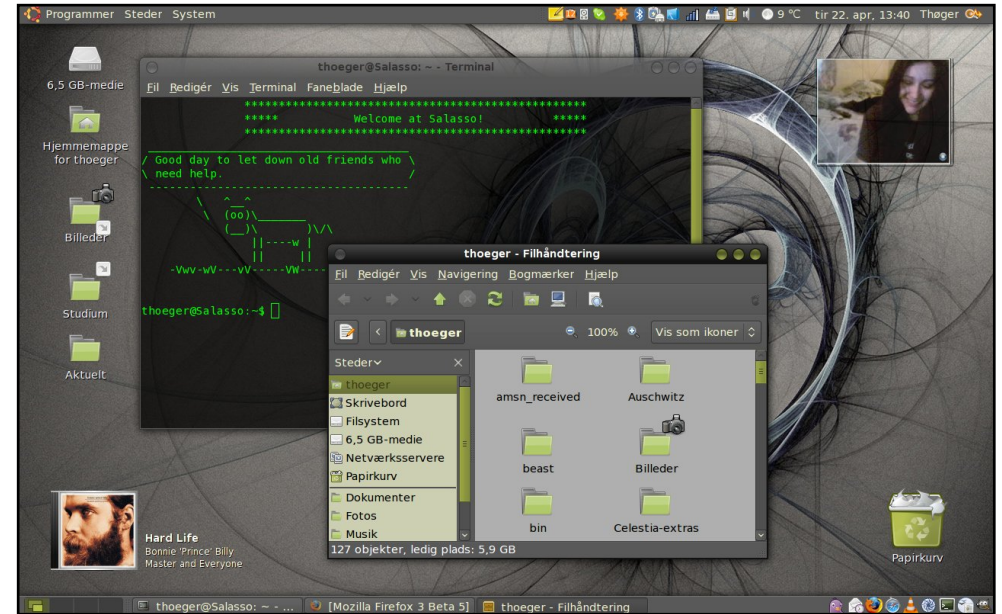
MY DESKTOP



Presently, I have Ubuntu 7.10 installed on an Acer Aspire notebook: 1.60GHz, dual-core, 1GB RAM, 80GB Hard disk, WiFi, and Bluetooth.

I have a highly customized and personalized installation. The appearance aspects are: Compiz Fusion with the Emerald window border decoration. Icons are OSX, and the control theme is Aero-clone. The default panel is neatly tucked away on the top left. Cairo-clock is at the bottom left. aMSN messenger is there too - with the aMSN live skin. And PCMan File Manager for tree structures and fast access. At the bottom centre of the screen I use AWN curve to move between running applications. Applications can be launched from the menu accessible with Super L+Alt key.

Muhammad Umar



Relatively little has been tweaked to achieve this look of my Ubuntu 8.04 desktop. Icons are the 'Tango-style' theme found on gnome-look.org. The wallpaper is from interfacelift.com. The window borders are a modification of 'Humanoid OS X Dark', also on gnome-look.org. I modified it to inherit the color of the buttons from the GTK theme colors, and to show a more neutral border on the inactive window - to make the active window more easily distinguished from the rest.

The GTK theme is the standard theme Clearlooks, with colors chosen to match the icons and wallpaper. Drop shadows are due to the Desktop Effects, as is the transparency of the screenlets. All running on my trusty Lenovo 3000 n100.

Thøger Thorsen



TOP 5 SLIM WEB BROWSERS

Written by Andrew Min

Your monthly list of Linux games or applications from the depths of the Internet. If you have an idea for a list, please email: misc@fullcirclemagazine.org

Epiphany

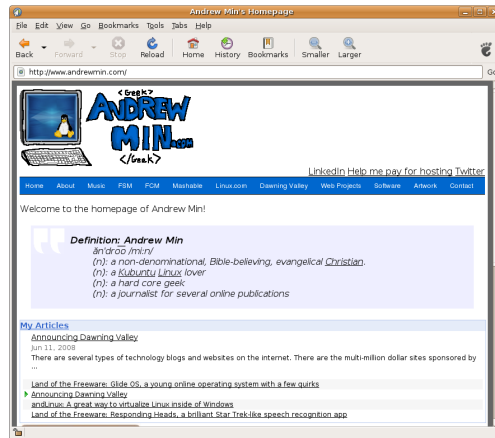
Homepage: <http://www.gnome.org/projects/epiphany/>

Epiphany (also known as "GNOME Web browser") is one of the best Web browsers for Gnome users.

Based on the now defunct but formerly popular *Galeon*, *Epiphany* has full Gnome

support, has tons of extensions, uses the standards-based Gecko browser engine, and is, overall, a fully functional Web browser. While you probably wouldn't use this baby in KDE, *Epiphany* is a wonderful tool if you're a Gnome user who is sick of Firefox's bloat but still want feature-rich browsing.

When installing *Epiphany*, **do not use the *epiphany* package** unless you want a Boulder Dash clone. Instead, you should install the ***epiphany-browser*** package in the Universe repository.



Dillo

Homepage: <http://www.dillo.org/>

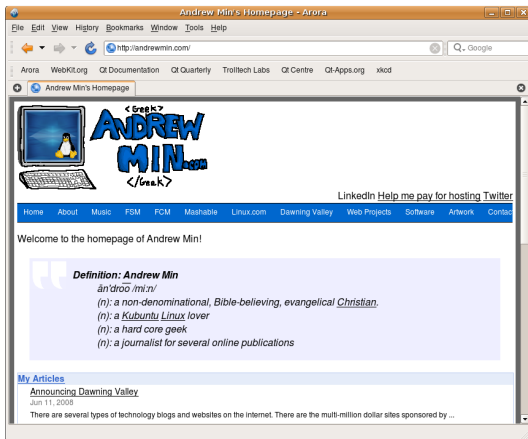
If you like simplicity, *Dillo* is perfect for you. It's one of the ugliest applications I've ever seen, but it takes up the smallest amount of window real estate I've ever seen. It's also lightning fast, but that's mainly because it doesn't support Java, JavaScript, or CSS. Heck, it can't even display some characters! Think of it as a graphical Lynx, except that it can display images. That's not to say that *Dillo* is useless, however. It's perfect for just getting information when Firefox is slowed to a crawl, and you want the info now. Yes, I'm American.

To install *Dillo*, use the ***dillo*** package in the Universe repository.





Arora



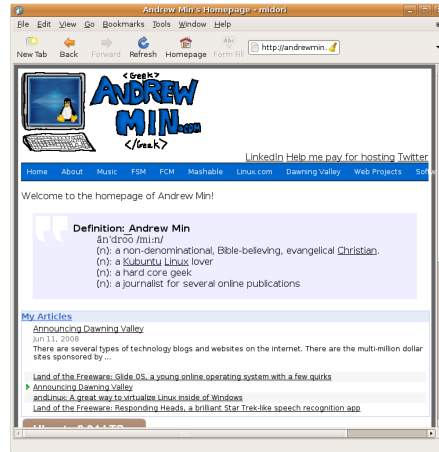
Homepage:

<http://www.arora-browser.org/>

This simple, cross-platform browser is one of my favorites on the list, mostly for its speed. It's blazing fast - even faster than Firefox 3 in my informal tests. It also looks great in both KDE and Gnome. And, for a project with less than 10,000 lines of code, it's got quite a few features, including tabs, bookmarks, and history. You do need to note that it is a tad unstable (it's not even in alpha yet).

Since it's not stable yet, *Arora* isn't in the Ubuntu repositories. To install it, add the Backport repositories (go to Software Sources and check "Unsupported updates" in the Updates tab), and then install the latest .deb from the *Arora* homepage.

Midori



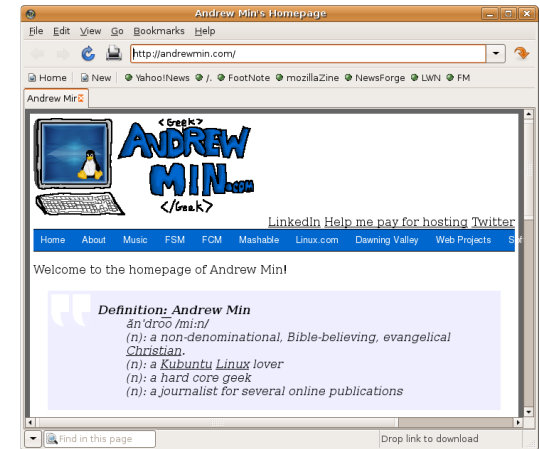
Homepage: <http://midori.sourceforge.net/>

For those who liked *Arora*'s fast, lightweight, WebKit-powered engine, but didn't like Qt, *Midori* is worth a go. Since it's WebKit, it's blazing fast. And it also has quite a few features - tabs, lots of interface customizability, proxies, and a very handy form fill. However, it still manages to stay light and unbloated - a lesson many other browsers should take note of. Note that, like *Arora*, it is definitely heavy alpha, so only the brave should install it.

To install *Midori*, grab the **midori** package from the universe repository. You can also grab the **midori-dbg** package if you're having some problems debugging it.

Andrew Min has been a Linux addict since he first installed openSuSE in VMWare. Learn more about him at <http://www.andrewmin.com/>

Kazehakase



Homepage:

<http://kazehakase.sourceforge.jp/>

WebKit is blazing fast, but often renders pages incorrectly. Gecko (Firefox's engine) renders everything except ActiveX, but is fairly slow. That's where *Kazehakase* comes in. Unlike most browsers (which only have one engine), *Kazehakase* has support for both Gecko and WebKit, with more engines like GkHTML, Dillo, and w3m to come. It also includes a very powerful GTK interface, complete with different levels of complexity (Beginner, Medium, and Expert), bookmarks, and much more.

To install *Kazehakase*, use the **kazehakase** package in the universe repository. In Intrepid, you'll also have to choose between **kazehakase-webkit** and **kazehakase-gecko**, since the Hardy version supports only Gecko.



HOW TO CONTRIBUTE



We are always looking for new articles to include in Full Circle. For article guidelines, ideas, and for issue translation, please see our wiki:

<http://wiki.ubuntu.com/UbuntuMagazine>

Please email your articles to: articles@fullcirclemagazine.org

If you would like to submit news, email it to:

news@fullcirclemagazine.org

Send your comments or Linux experiences to:

letters@fullcirclemagazine.org

Hardware/software reviews should be sent to:

reviews@fullcirclemagazine.org

Questions for Q&A should go to:

questions@fullcirclemagazine.org

MyDesktop screens should be emailed to:

misc@fullcirclemagazine.org

If you have questions, you can visit our forum:

www.fullcirclemagazine.org

Deadline for Issue #16:

Sunday 03rd August.

Release date for issue #16:

Friday 29th August.

HAVE YOUR SAY

If you want to have your say on how Full Circle Magazine develops, please attend our monthly IRC meeting.

You can find our next Agenda at:

<http://url.fullcirclemagazine.org/f2ba08>

We want input from you, the reader, to help us make decisions that affect the magazine.

Next general meeting (all welcome):

Sat. 12th August at 1700 UTC.

Meetings take place in the IRC channel **#fullcirclemagazine**, which is on the irc.freenode.net server. Or you can use our webIRC page which is at <http://irc.fullcirclemagazine.org> and it will allow you to interact with our IRC channel from within your web browser.

Full Circle Team

Editor - Ronnie Tucker

ronnie@fullcirclemagazine.org

Webmaster - Rob Kerfia

admin@fullcirclemagazine.org

Comms Mgr - Robert Clipsham

mrmonday@fullcirclemagazine.org

Contributors

Samuel Barratt Robert Clipsham

Daniel Cohen Philipp Höhn

Andrew Min Vid Ayer

Proof Readers

Jim Barklow

Gord Campbell

David Haas

Mike Kennedy

David Sutton

David Waldrop

Andrew Min

Matt Janeski

And our thanks go out to *Canonical*, the *Ubuntu Marketing Team* and the many translation teams around the world.